

TradeGuider RT V4 Quick Install Guide.

The objective of this guide is to get the software installed and up and running with one of the data providers.

Pre-requisites.

The TradeGuider RT software does not include a data feed. We recommend setting up a data feed subscription from either eSignal or RealTimeData.com prior to installing the TradeGuider software.

If you choose eSignal as your data provider please make sure you download their eSignal 10.6 software. http://download.esignal.com/products/esignal/esignal_10.6.2425.exe This can be installed and used along with their eSignal 11 software if you are using eSignal 11 for charting purposes.

You can find out more information about eSignal data and their pricing from the following link.

<http://www.esignal.com/ondemand/pricing.aspx?tc=%20and%20http://www.realtimedata.com/>

Both their 'Premium' data services and 'On Demand' data services will work with the TradeGuider RT software.

You can also contact eSignal at 1 800 815 8256 for more information regarding their services and pricing.

If you choose RealTimeData.com no additional software is needed as the TradeGuider RT software connects directly to the RealTimeData.com servers.

You can find out more about their live data services and pricing from the following link.

<https://www.realtimedata.com/signup/customerinfo.aspx?soc=q208ry>

You can also contact RealTimeData.com at 1 512 215 5995 Monday – Friday, 6am - 6pm CST

If you are unsure of which data provider you want to use or are only going to use end of day data that is in the MetaStock format, choose RealTimeData.com as your data provider during the installation and cancel the setup when prompted for your name and password.

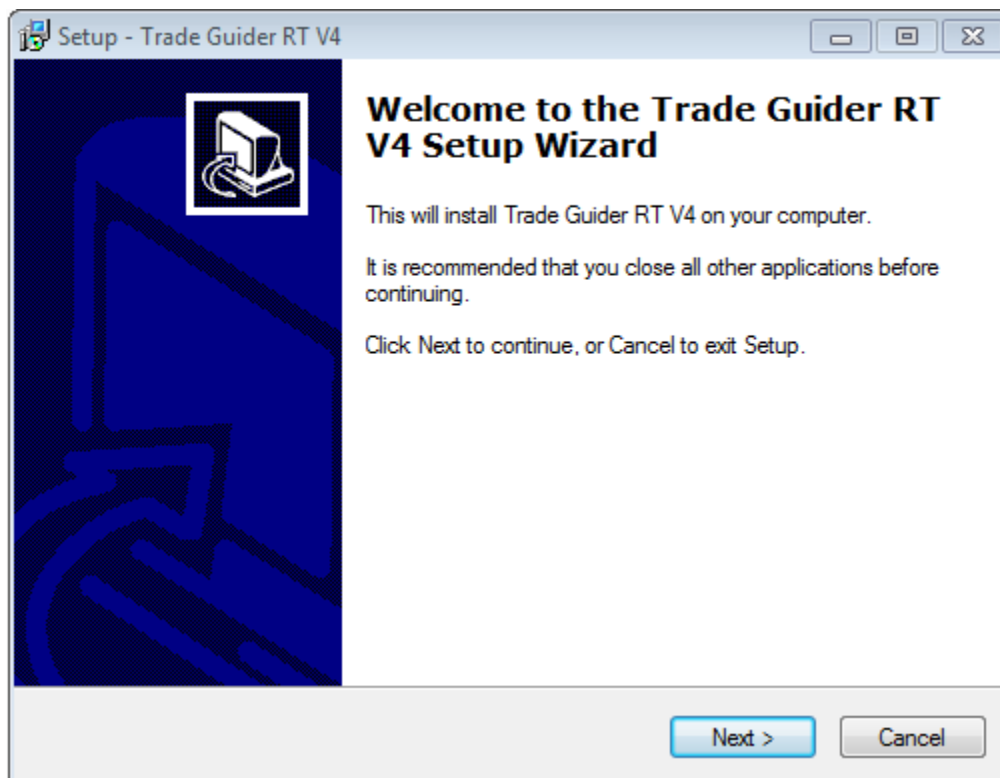
Section 1 – Download and Installation.

You can find the TradeGuider RT V4 download in products section of the TradeGuider website. Login and product purchase is required to download the software.

Once you have the software downloaded, run the TGRTV4Setup.exe file to begin. Windows 7 and Windows Vista users you may be prompted with a User Account Control window when first starting the installer, click Yes or Accept to proceed.

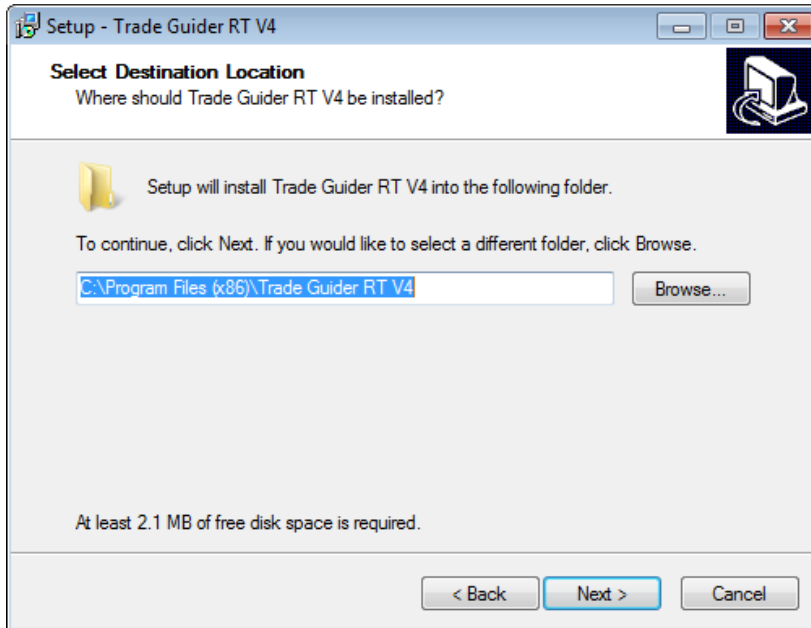
Step 1.

When the installer starts you will be greeted with the installation wizard.



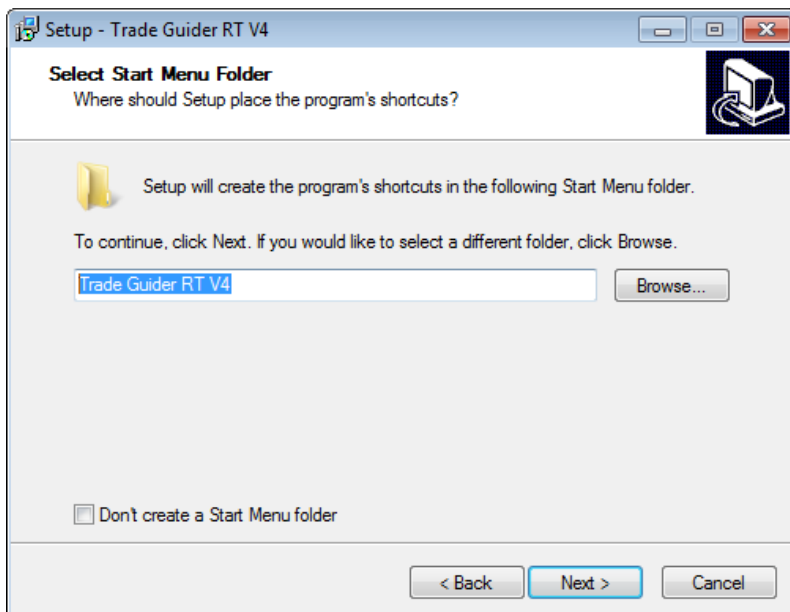
Read the onscreen information and click the 'Next' button to proceed.

Step 2. The installation wizard will allow you to choose where to install the software. This will be filled in automatically, no changes are necessary.



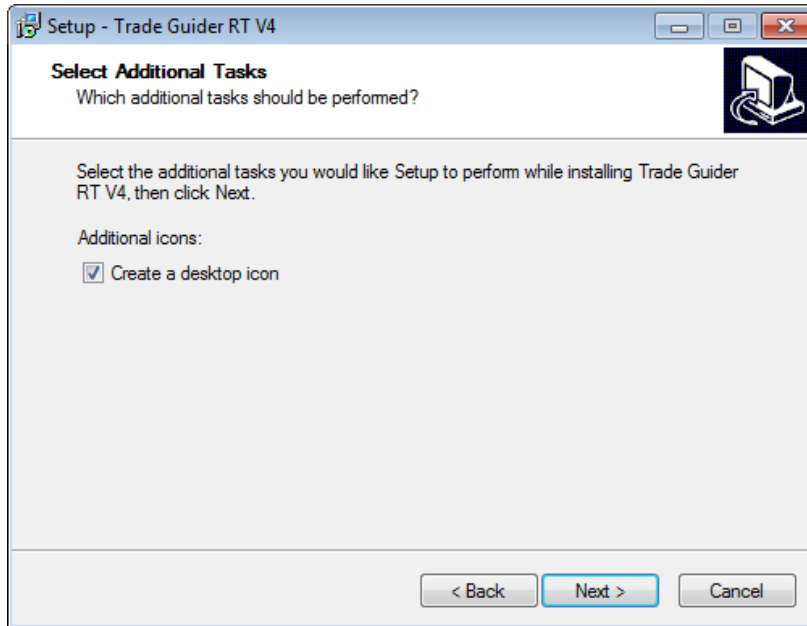
Click the 'Next' button to proceed.

Step 3. In the following step you can change the location of the start menu folder, or check the 'Don't create a Start Menu folder' option. This is filled in automatically and no changes are necessary.



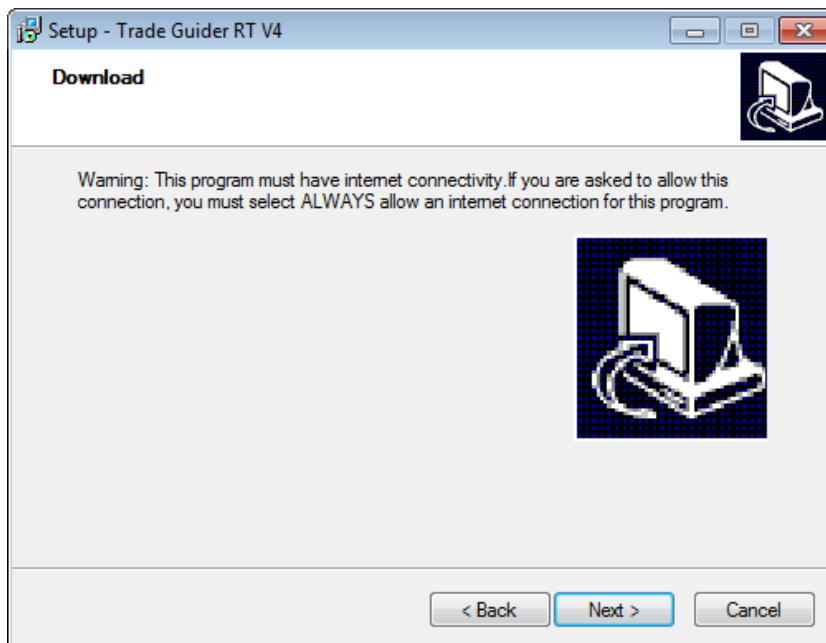
Click the 'Next' button to proceed when ready.

In the following step you will have to option to create a desktop icon that you can use to launch the software. If you don't want to create a desktop icon leave the box unchecked.



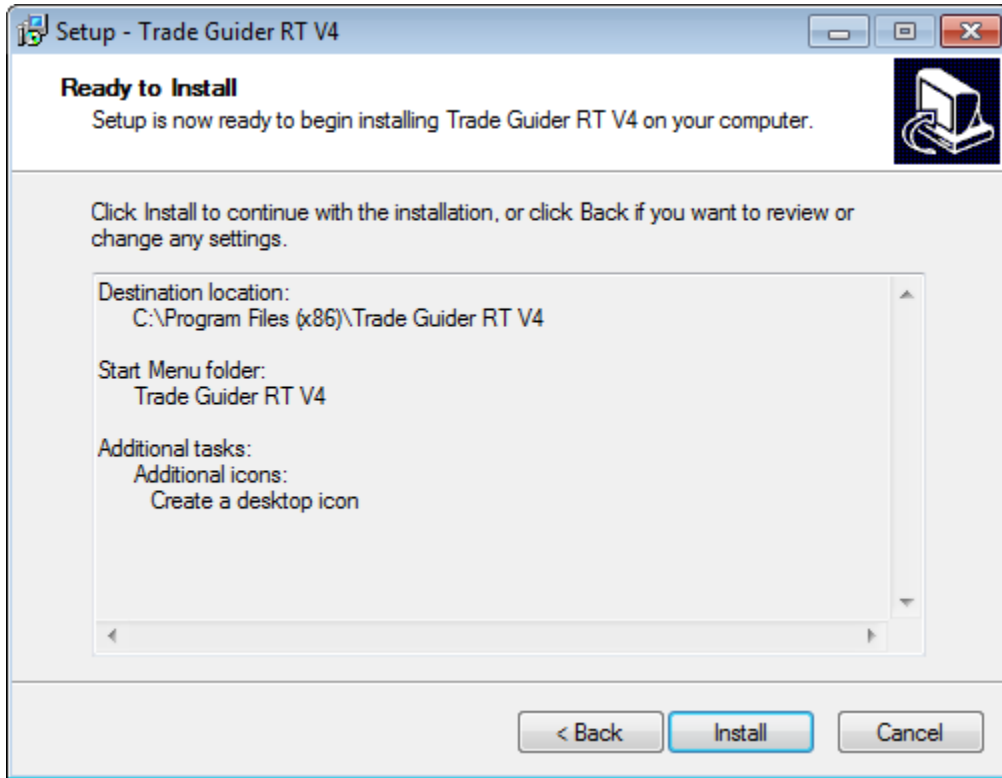
Click the 'Next' button to proceed.

You will now be notified that you need an internet connection to download the necessary files to complete the installation.



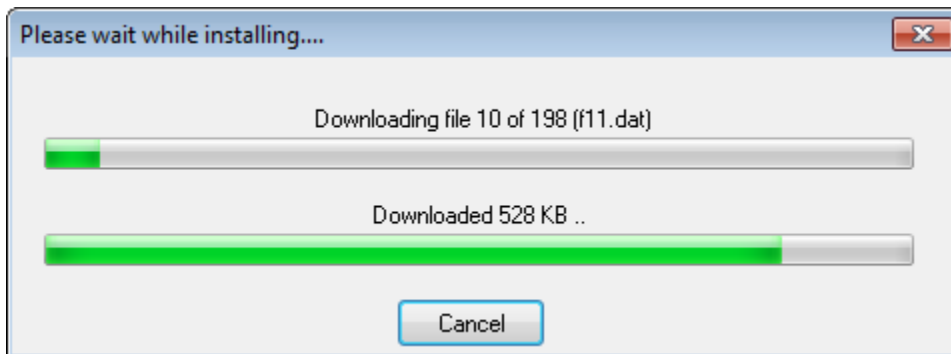
Click the 'Next' button to proceed.

Now you are ready to install the software. Review the choices made and if you need to change anything click the 'Back' button and make any necessary changes of the previous steps.

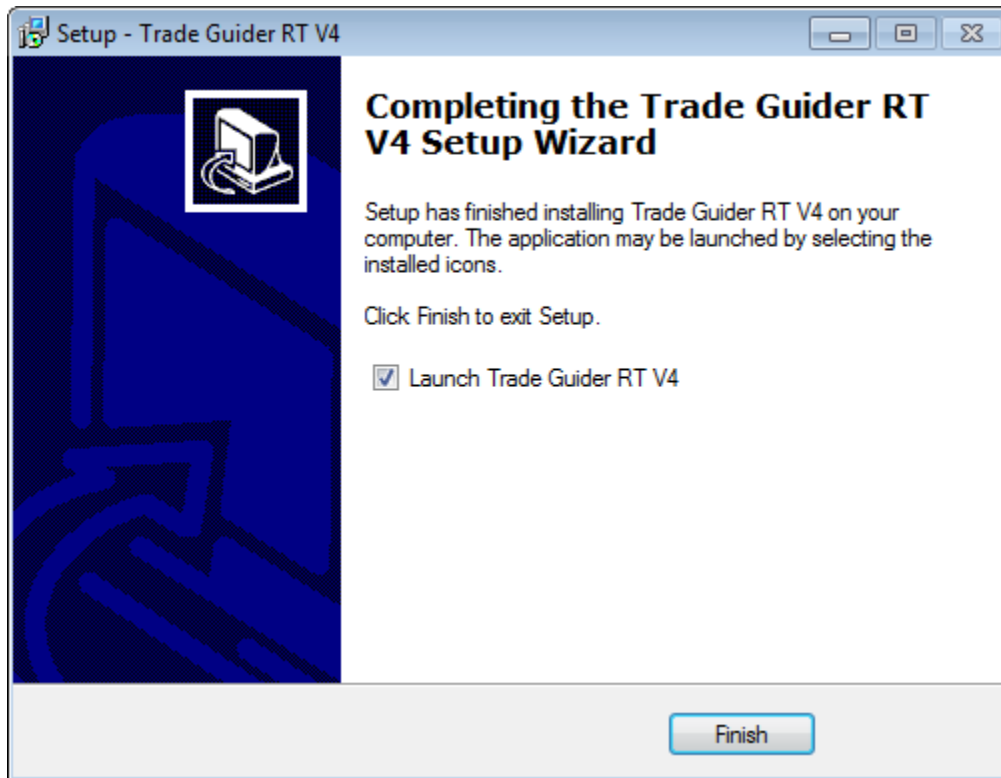


Click the 'Install' button when ready to download the additional files and install TradeGuider RT V4.

The installer will now connect and download the files. You will see a progress bar showing the download installation progress.



When the files are downloaded and installed you will see the following message. Make sure that the Launch Trade Guider RT V4 box is checked.



Now click the 'Finish' button.

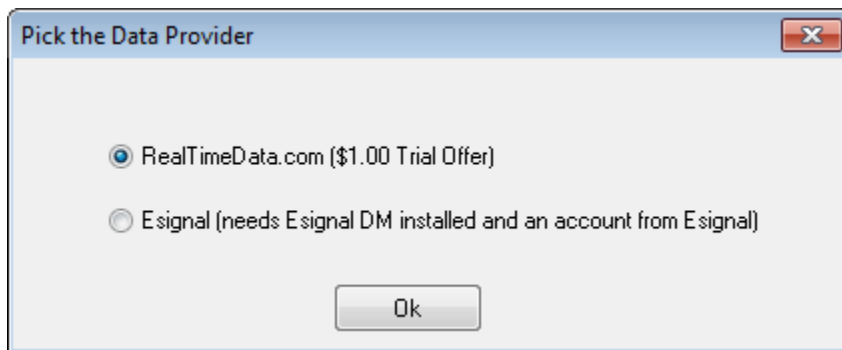
This completes the download and installation process. In the next section we will move on to the initial setup and choice of data providers.

We do recommend that you have an account setup with one of the compatible data providers and any required additional software installed as noted in the pre-requisite at the beginning of this document.

Section 2 – Setup for RealTimeData.com data.

In this section we will cover the setup of the TradeGuider RT software for use with RealTimeData.com and continues after the last step in Section 1. If you have an eSignal data subscription or are planning to, please skip Section 2 and go to Section 3 for setup instructions.

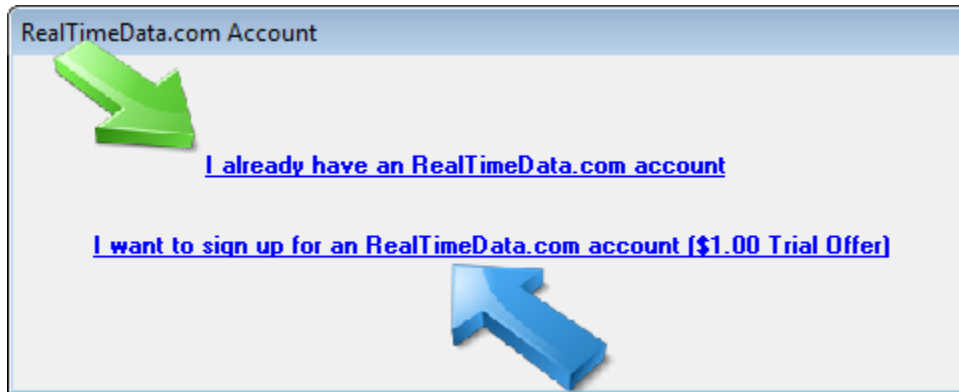
Step 1.



You will be prompted to choose your data provider. For the TradeGuider RT software you have two options for a live data provider, either eSignal or RealTimeData.com. Hint, there are links for both of these data providers in the beginning of this guide in the pre-requisite section.

For this section we are setting up the TradeGuider RT software to use the RealTimeData.com data services. Leave the selection set to 'RealTimeData.com' and click the 'OK' button to proceed.

Step 2.

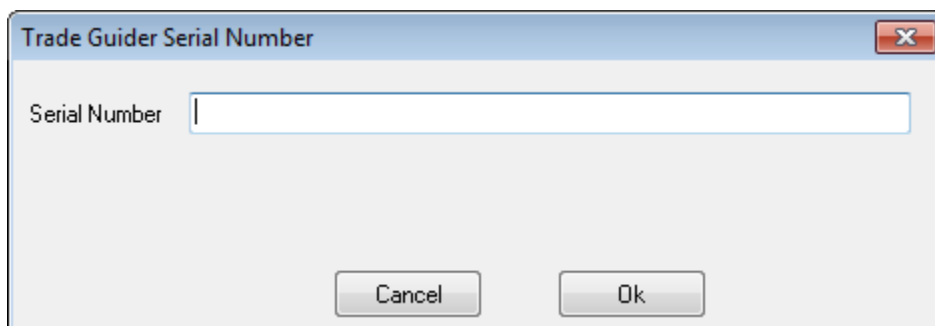


You will now have two choices for RealTimeData.com.

If you have an account with RealTimeData.com click the link 'I already have an RealTimeData.com account' where the green arrow is pointing.

If you don't have an account with RealTimeData.com click the 'I want to sign up for an RealTimeData.com account' indicated by the blue arrow. Please note, the \$1.00 trial offer is no longer valid from RealTimeData.com. You can use the following link to sign up for a live data feed from RealTimeData.com <https://www.realtimedata.com/signup/customerinfo.aspx?soc=q208ry>

Step 3.

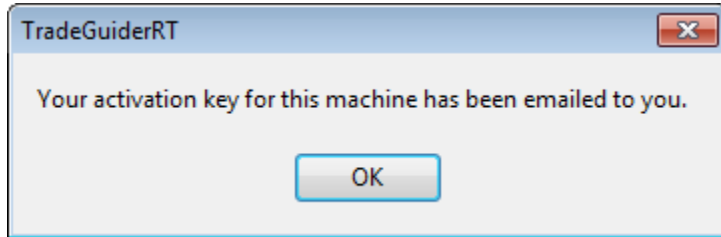


You will now be prompted for your serial number which you should have received in an email from TradeGuider. Please copy the serial number from the email and paste it into the software.

Note if you receive an invalid serial number message make sure you copied the serial number exactly, it is case sensitive and capitalization is important. It is also important to check for any extra spaces before or after the serial number that may have been copied.

Step 4.

Once you input the serial number correctly you will receive the message that an activation key has been emailed to you.

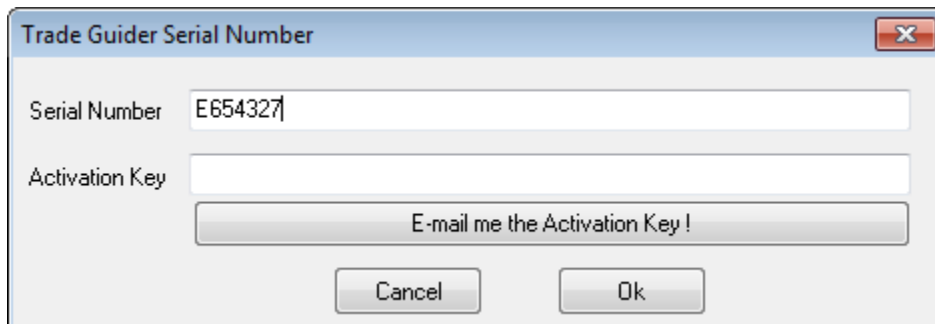


Click the 'OK' button to proceed.

Note the activation key is sent from noreply@tradeguidersupport.com with the subject 'TradeGuider – Activation key'. If you don't see this in your email inbox check any spam or junk mail folders you may have.

Step 5.

Once you receive the activation key email copy and paste it into the software in the Activation Key field.

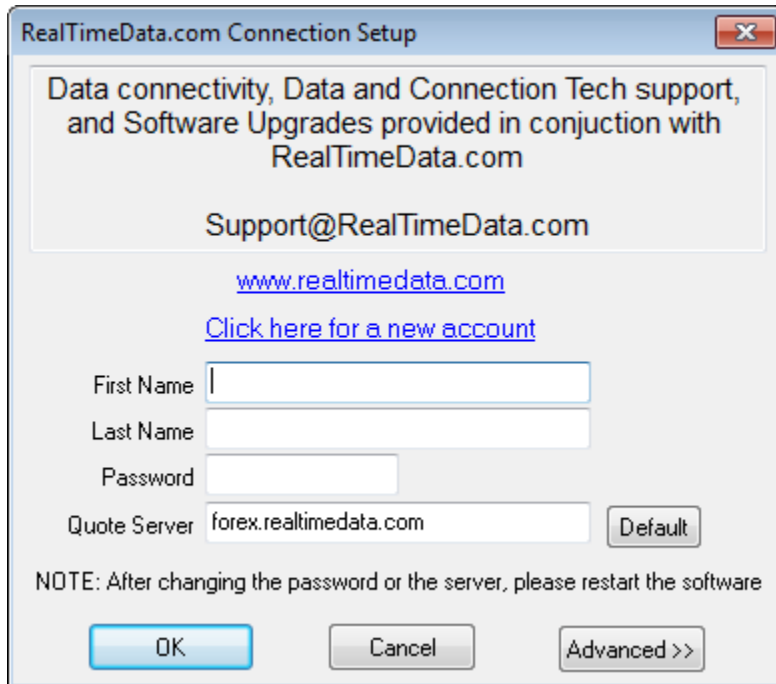


Click the 'OK' button to proceed.

Note if you receive an invalid serial number message make sure you copied activation key exactly, it is case sensitive and capitalization is important. It is also important to check for any extra spaces before or after the serial number that may have been copied as this is a leading cause of the message.

Step 6.

Upon successfully completing your serial number and activation key you will be prompted to enter your subscription information for the RealTimeData.com live data services.



The image shows a dialog box titled "RealTimeData.com Connection Setup". Inside the dialog, there is a text box containing the following information: "Data connectivity, Data and Connection Tech support, and Software Upgrades provided in conjunction with RealTimeData.com". Below this, the email address "Support@RealTimeData.com" is displayed, followed by the website "www.realtimedata.com" and a link "Click here for a new account". There are three input fields: "First Name", "Last Name", and "Password". The "Quote Server" field is pre-filled with "forex.realtimedata.com" and has a "Default" button next to it. At the bottom, there is a "NOTE: After changing the password or the server, please restart the software". Three buttons are at the bottom: "OK", "Cancel", and "Advanced >>".

Enter your name and the password that RealTimeData.com has provided for you in an email. Then click the 'OK' button to proceed.

If you receive any connection errors please double check your password from RealTimeData.com and re-enter it making sure it is capitalized as needed. If you still get an error message please contact RealTimeData.com for password assistance.

support@realtimedata.com

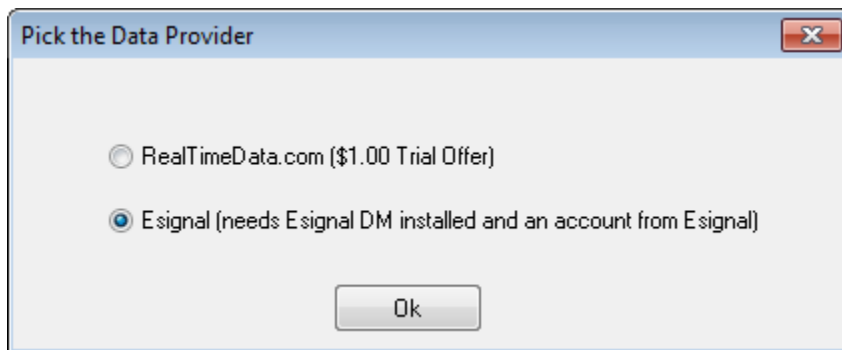
Hint the password for the RealTimeData.com feed is not the same as the password for the TradeGuider website.

You have now successfully completed the setup for the RealTimeData.com data service. You can proceed to Section 4 of this guide for understanding the TradeGuider charts and hints on how to add symbols and work with the charts.

Section 3 – Setup for eSignal data.

In this section we will cover the setup of the TradeGuider RT software for use with the eSignal data feeds and continues after the last step in Section 1. If you have a subscription with RealTimeData.com for your data please skip Section 3 and go back to Section 2 for setup instructions.

Step 1.



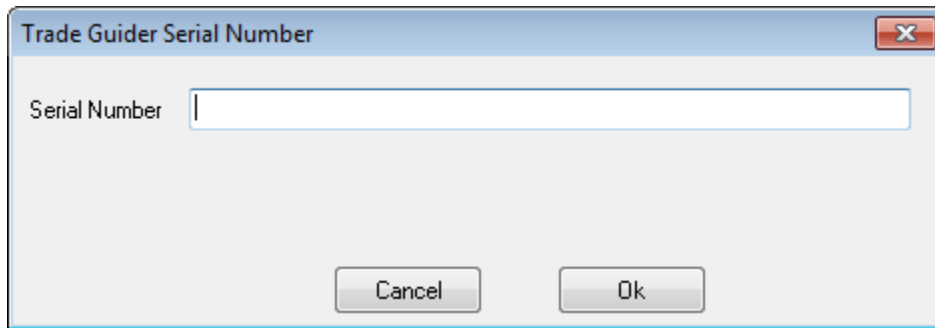
You will be prompted to choose your data provider. For the TradeGuider RT software you have two options for a live data provider, either eSignal or RealTimeData.com.

For this section we are setting up the TradeGuider RT software to use the eSignal data services. Make sure you select Esignal and click the 'OK' button to proceed.

Hint, there are links for information regarding both of these data providers in the beginning of this guide in the pre-requisite section.

It is important to note that TradeGuider will only properly work with the eSignal data services if you have the eSignal 10.6 software installed, it does not work with eSignal 11. You can find a link to the eSignal 10.6 software at the beginning of this guide in the pre-requisite section.

Step 2.

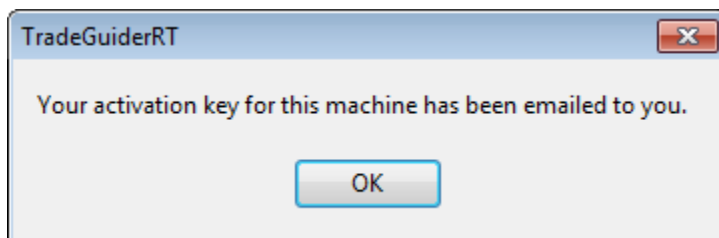


You will now be prompted for your serial number which you should have received in an email from TradeGuider. Please copy the serial number from the email and paste it into the software.

Note if you receive an invalid serial number message make sure you copied the serial number exactly, it is case sensitive and capitalization is important. It is also important to check for any extra spaces before or after the serial number that may have been copied.

Step 3.

Once you input the serial number correctly you will receive the message that an activation key has been emailed to you.

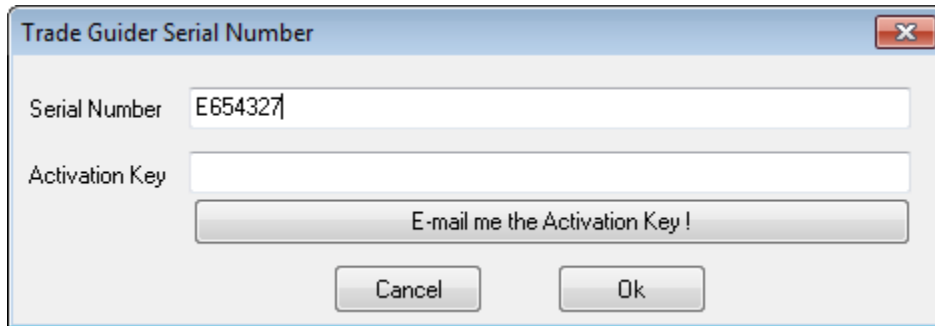


Click the 'OK' button to proceed.

Note the activation key is sent from noreply@tradeguidersupport.com with the subject 'TradeGuider – Activation key'. If you don't see this in your email inbox check any spam or junk mail folders you may have.

Step 4.

Once you receive the activation key email copy and paste it into the software in the Activation Key field.



The image shows a dialog box titled "Trade Guider Serial Number". It has a standard Windows-style title bar with a close button (X) in the top right corner. The dialog contains two text input fields: "Serial Number" and "Activation Key". The "Serial Number" field contains the text "E654327". Below the "Activation Key" field is a button labeled "E-mail me the Activation Key!". At the bottom of the dialog are two buttons: "Cancel" and "Ok".

Click the 'OK' button to proceed.

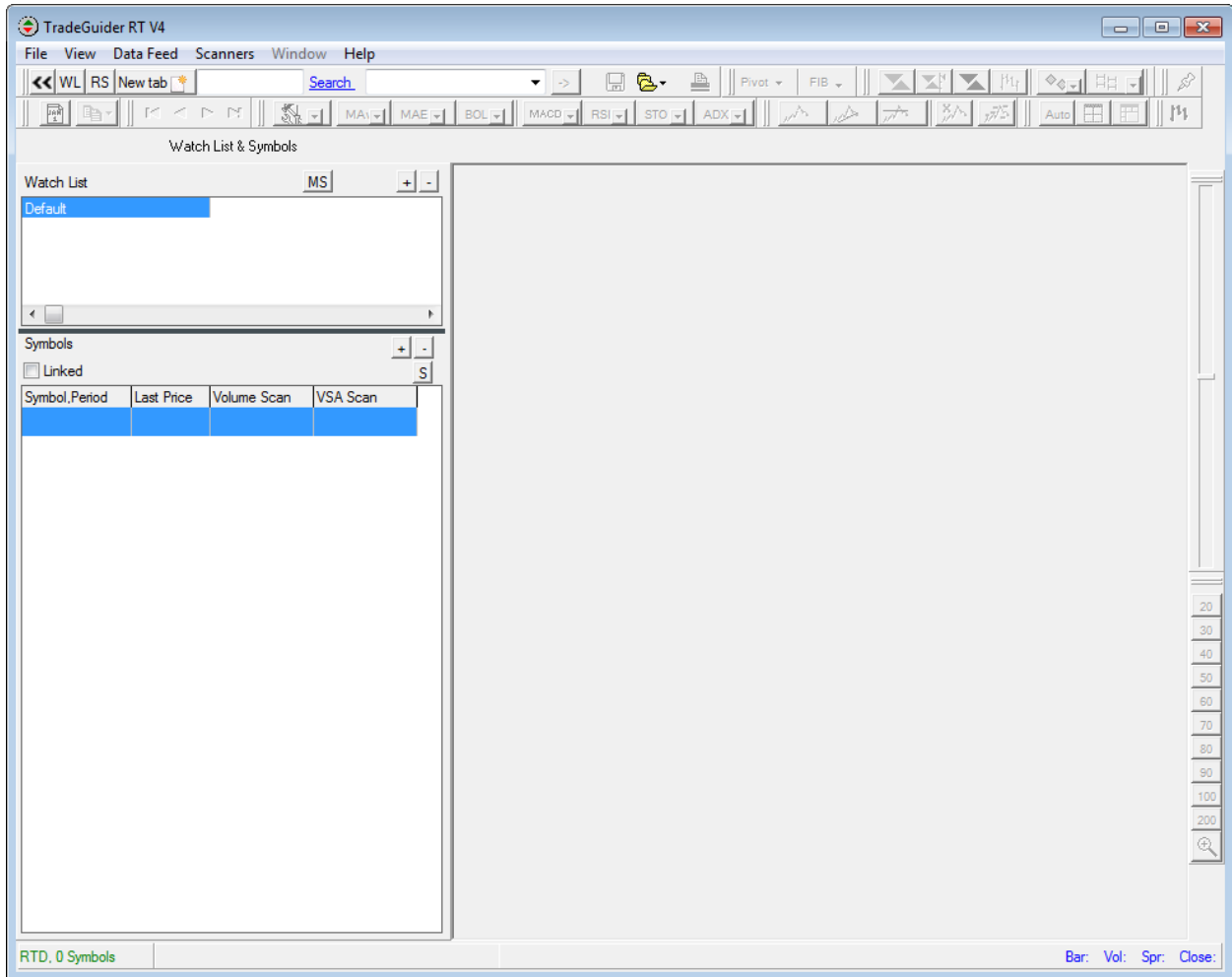
Note if you receive an invalid serial number message make sure you copied activation key exactly, it is case sensitive and capitalization is important. It is also important to check for any extra spaces before or after the serial number that may have been copied as this is a leading cause of the message.

You have now successfully completed the setup for the eSignal data service. You can proceed to Section 4 of this guide for understanding the TradeGuider software and hints on how to add symbols and work with the charts.

Section 4 – Adding symbols and working with the charts.

Since most people want to open a chart and see the software in action after the install this section will do just that.

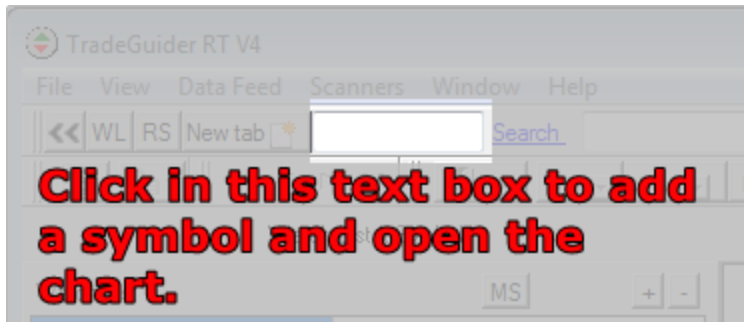
Now that it is installed you will notice that TradeGuider is empty, a blank canvas that you need to fill. There are no symbols added or charts open, so let's resolve that now.



Step 1 - Adding a symbol and opening a chart.

There are a couple of ways to add symbols to the software and open charts. We are now going to look at the fastest way of doing this through the 'type and go' symbol text box.

Click in the text field at the top of TradeGuider like the following image.

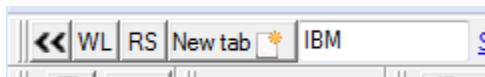


You should see a flashing cursor in the text box, type in a symbol and press the enter (return) key on the keyboard.

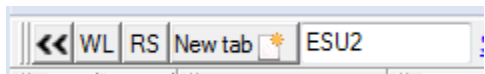


If you don't know any symbols here are a few common examples for eSignal and RealTimeData.com. Please note that for Futures and Forex eSignal and RealTimeData.com use different symbol formatting.

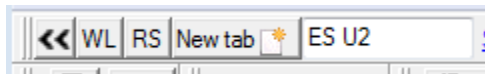
Common U.S. stocks are the same for both data providers, type IBM in and click the enter button on your keyboard.



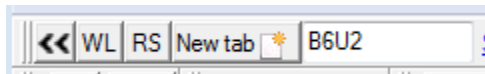
Futures – emini S&P 500 - RealTimeData.com



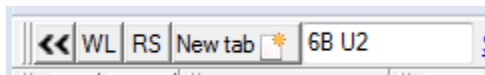
Futures – emini S&P 500 - eSignal



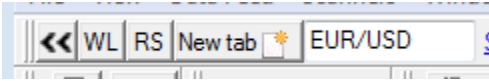
Futures – British Pound - RealTimeData.com



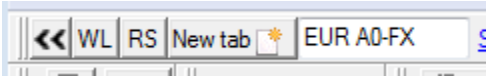
Futures –British Pound - eSignal



Forex – Euro / US Dollar - RealTimeData.com



Forex – Euro / US Dollar -



These symbols are provided as examples and ability to use one of these examples depends on your data provider and the subscription you have chosen. They do not guarantee your access to download data for any of the provided example symbols.

If your data subscription doesn't cover any of those examples check the website of your data provider for more information and proper formatting of symbols.

RealTimeData.com - <http://www.realtimedata.com/Resources.aspx>

eSignal - <http://kb.esignal.com/article.aspx?article=2739&p=1>

After typing in the symbol and clicking the enter key on your keyboard the chart will open.



You will notice that the chart opened in the 1 hour format. This is the default if you don't specify a time interval, more on how to do that in a minute.

You will also notice that the symbol you entered was added to the symbol area on the left of the charts. Each time you add a symbol it is automatically saved to watch list you had selected, since we didn't create a new watch list our symbol was added to the Default watch list that is automatically created when the software was installed.

Another thing that you will notice is that some of the toolbar buttons that were grayed out and inactive are now colored and active. These toolbar buttons and even some of the menu selections are dynamic, meaning you have to have a chart open to use them.

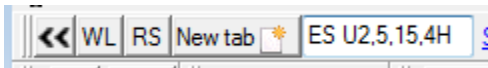
One last thing you will notice is that in the lower left hand corner where the data provider is listed the symbol count has been updated. Each time you add a symbol it updates this count and if you delete a symbol the count is updated when the software is restarted.

Note, the maximum number of live data symbols that should be entered into the software is 100. More than 100 live symbols can cause some symbols not to receive data or to stop updating.

Only symbols are counted, the time intervals are not. So you can have one symbol with 5 different time intervals and it will only count as one symbol. For example ES U2 5 minute, 15 minute, 1 hour, and 4 hour only count as one symbol.

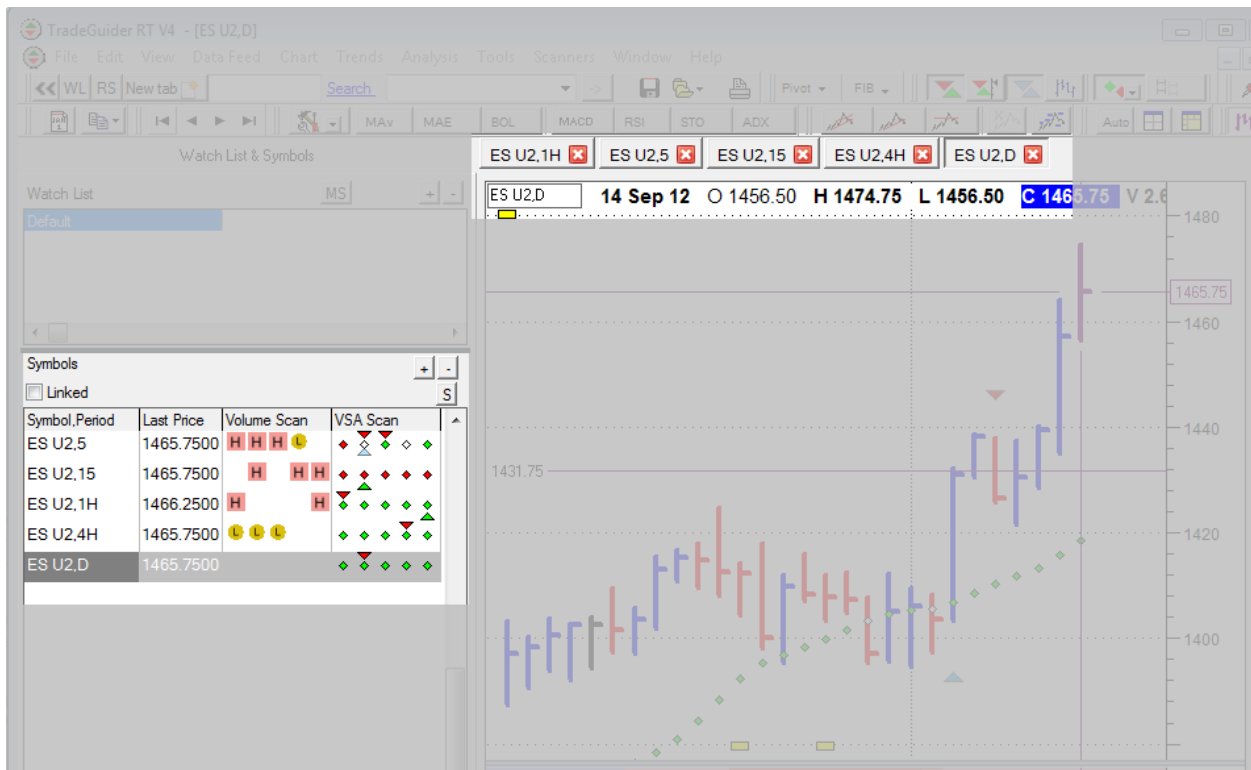
Step 2 - Adding additional time intervals and opening multiple charts.

Go back to the type and go box at the top of the page and enter a symbol, but this time add a comma and a time interval followed by an additional comma and another time interval like in the following example image.

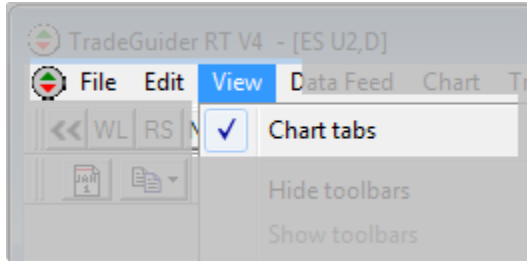


This will open multiple charts of the selected time intervals. Notice that there are no spaces between the commas and requested time intervals in that example.

Looking at TradeGuider you will now see that there are multiple symbols in your list and if you look at the area above your charts you will see the tabs for all of the open symbols.



Hint: If you don't see the chart tabs at the top, click View on the menu and choose the chart tabs option. It is enabled when the option has a check next to it.

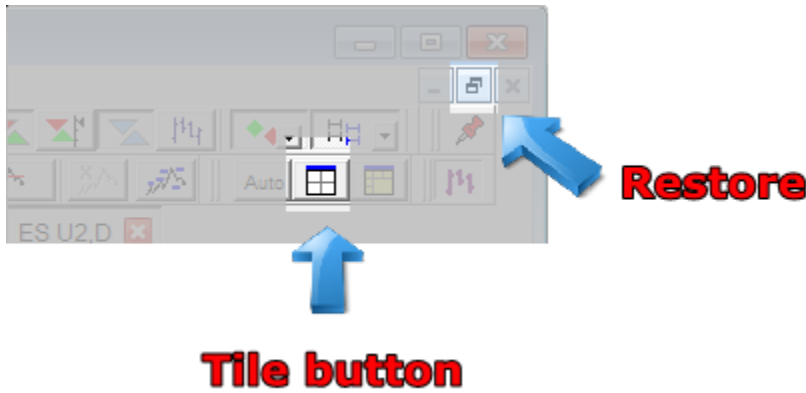


You can click on the chart tabs to navigate between open charts and you can have a maximum of 16 open charts at any given time.

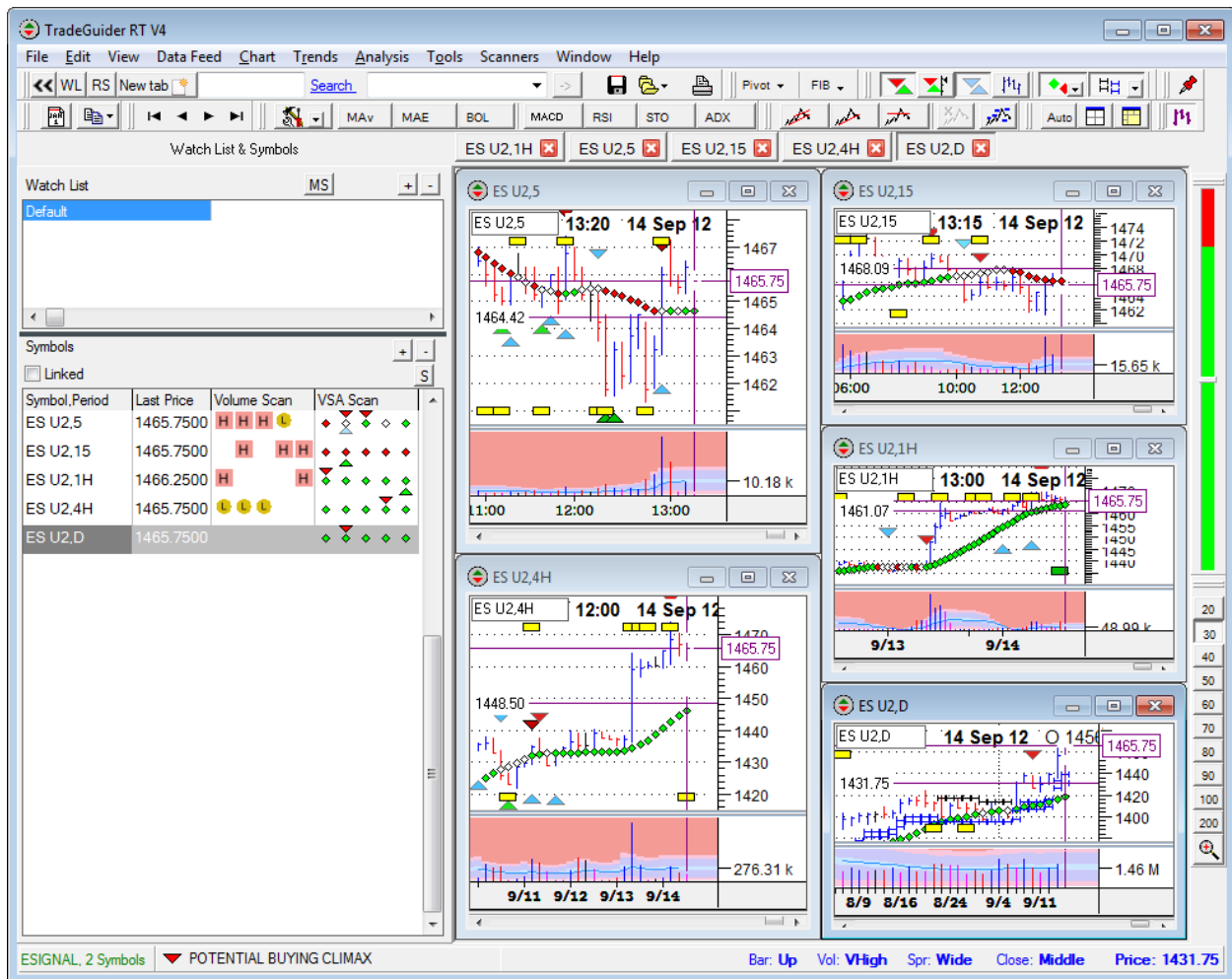
Note: If you find that having a lot of open charts slows down your computer performance, try closing some charts.

Step 3 - Tiling multiple charts.

There are a couple of ways of doing this, but the easiest way is to click the restore button in the upper right corner above the charts, then click the tile button on the toolbar.



This is what the charts will look like when tiled.



The TradeGuider software divides the space evenly and in the case of an odd number of charts splits them to use the space in the best possible way.

You can also click Window on the menu and choose Tile. Just remember that if your chart is maximized you have to reduce it first by clicking the restore button first or by clicking Window on the menu and choosing Cascade.

This concludes the quick install guide. For more information regarding other tools and use of the software please visit the online trading course. You will find this located in the products section of the website. Log in and choose product, then choose the RT product link, and then the link for step 2, the trading course. This course consists of numerous videos and pdf documents you can download.

Thank you,

TradeGuider